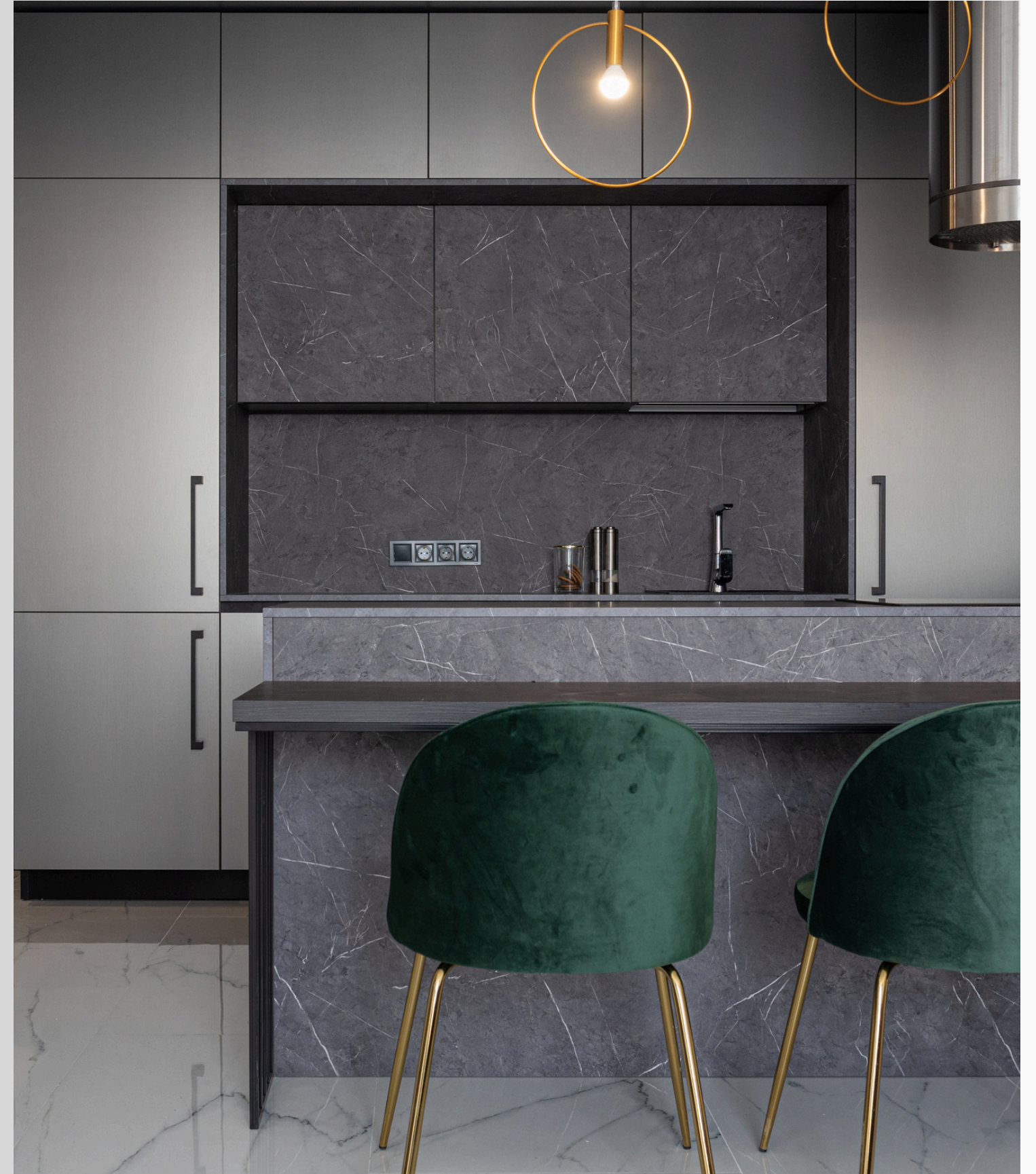


POTENTIAL INTERIORS

CURATED BY:PRITIKA PANDEY



ABOUT US

Potential Interior is a interior design firm crafting minimal luxury spaces that feel rich, regal, and deeply personal.

With over 5 years of experience, we specialise in high-end projects above 15000 sq. ft., blending modern design with Indian elegance to create timeless environments. Whether it's a premium residence or a budget-conscious luxury space, our goal is the same — to make every corner feel like understated royalty.

We don't just design spaces — we design experiences worth remembering.





ABOUT THE PROJECT

Whether it's a chic 2BHK or a sprawling 15,000 sq. ft. villa, every project by Potential Interior is a statement of understated luxury.

We approach each space — big or small — with the same design philosophy: to craft refined, emotionally resonant interiors that exude elegance, comfort, and cultural depth. Every detail, from material selection to spatial flow, is tailored to elevate everyday living into a luxurious experience.

Because true luxury isn't measured by size — it's felt in the way a space makes you feel.

PROJECT

BY: POTENTIAL INTERIORS

01 BEDROOM

02 KITCHEN

03 LIVING ROOM

04 DRESSING ROOM

05 SALON

06 HOSPITAL

07 RESIDENTIAL PROJECTS



BEDROOMS



Our bedroom designs blend rich textures, soft lighting, and functional layouts, ensuring each element supports both luxury and livability. From walk-in wardrobes to curated wall finishes, every detail is customized to reflect the client's personality while maintaining timeless appeal.



KITCHEN



Where functionality meets finesse. Our kitchens are designed to be sleek, efficient, and elegant — blending smart layouts with premium finishes for a space that's as beautiful as it is practical.



LIVING ROOM



At Potential Interior, the living room is designed as the heart of the home — where luxury feels effortless and elegance is lived in. We blend clean lines, rich textures, and warm tones to create spaces that are both inviting and impressive. Every element is thoughtfully curated to reflect a refined lifestyle, balancing comfort with timeless sophistication.



DRESSING ROOM



A dressing room should feel like a personal luxury suite — calm, organised, and beautifully curated. At Potential Interior, we design these spaces to blend function with finesse, using smart storage, rich textures, and ambient lighting to create an experience that feels both indulgent and effortlessly elegant. It's not just about getting ready — it's about feeling elevated every day.



SALON

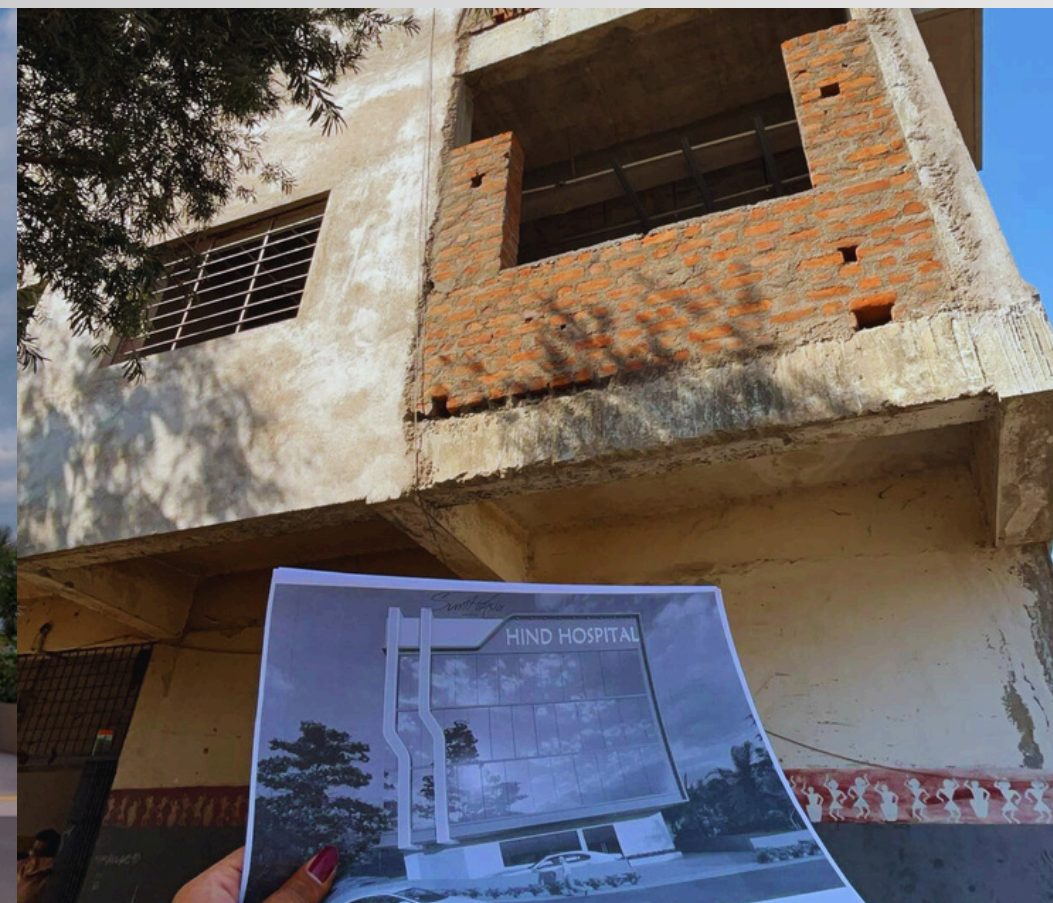


A salon should be a sanctuary of beauty and sophistication. At Potential Interior, we design salon spaces that feel luxurious, welcoming, and high-performing — combining seamless functionality with rich textures, ambient lighting, and clean, modern forms. Every corner is crafted to enhance both the client experience and brand presence, turning beauty services into a truly elevated ritual.



06 HIND HOSPITAL

Our ongoing commercial hospital project of 15,000 sq ft. is a reflection of purpose-driven design fused with modern luxury. Every space is planned to elevate brand identity while ensuring functionality, flow, and visual appeal. From layout to lighting, the design balances professional presence with premium aesthetics, creating an environment that feels bold, refined, and built for impact.





RESIDENTIAL PROJECT

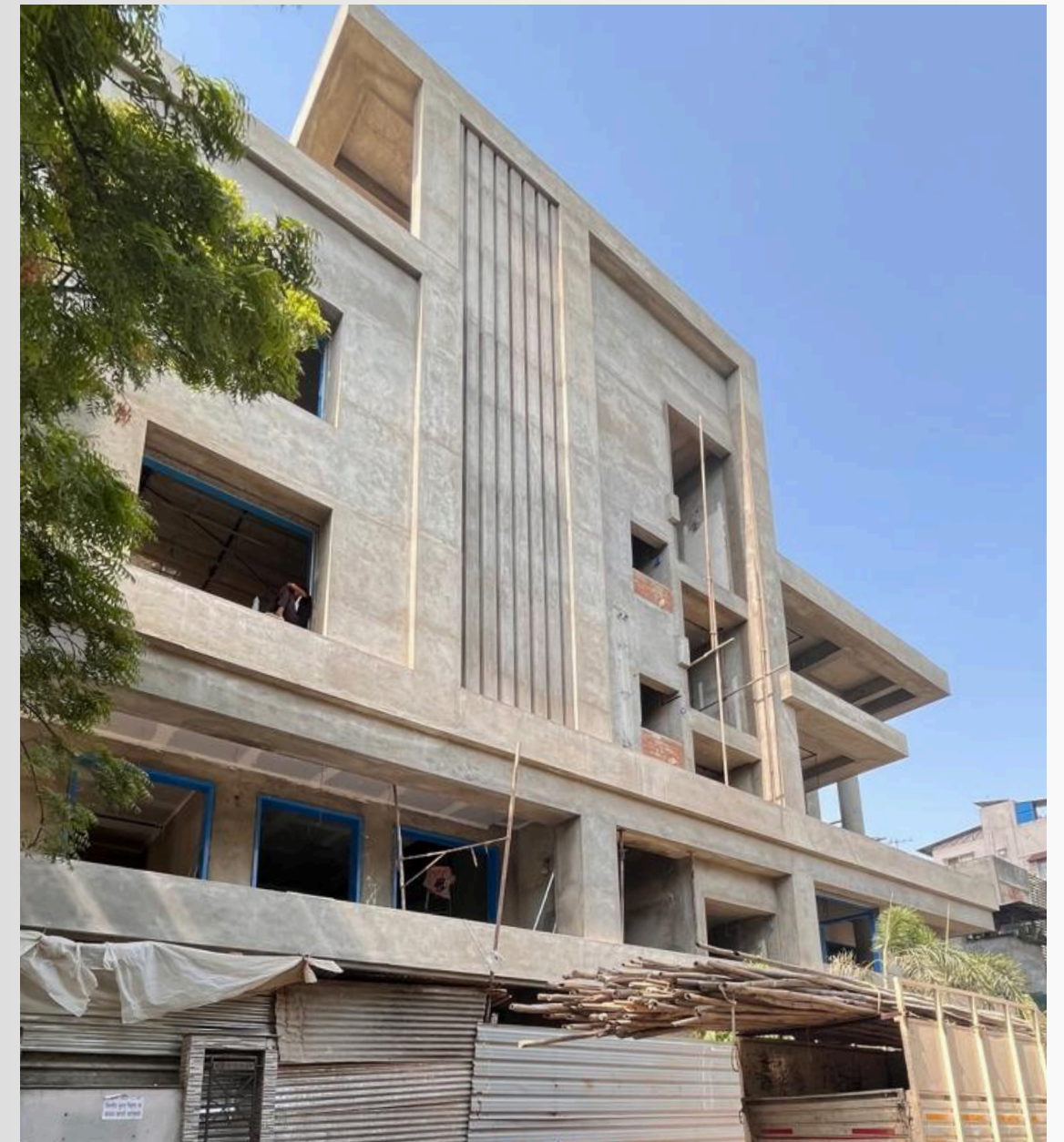
This 3000 sq. ft. residence is designed as a perfect blend of comfort, elegance, and functionality. Every corner is curated to reflect the client's lifestyle while maintaining our signature touch of minimal luxury. With warm textures, clean lines, and thoughtful spatial flow, the home offers a timeless environment that feels both deeply personal and effortlessly refined.





RESIDENTIAL PROJECT

This project is a 6,000 sq. ft. luxury residential villa located in the heart of Nagpur. Thoughtfully designed to accommodate two families, the villa is a seamless blend of contemporary elegance and functional planning. The space is divided into two distinct units—each tailored for two brothers—offering privacy while maintaining architectural harmony. One unit features a spacious 3BHK layout, while the overall design ensures expansive living areas, modern amenities, and a cohesive yet individualistic lifestyle experience for both families.

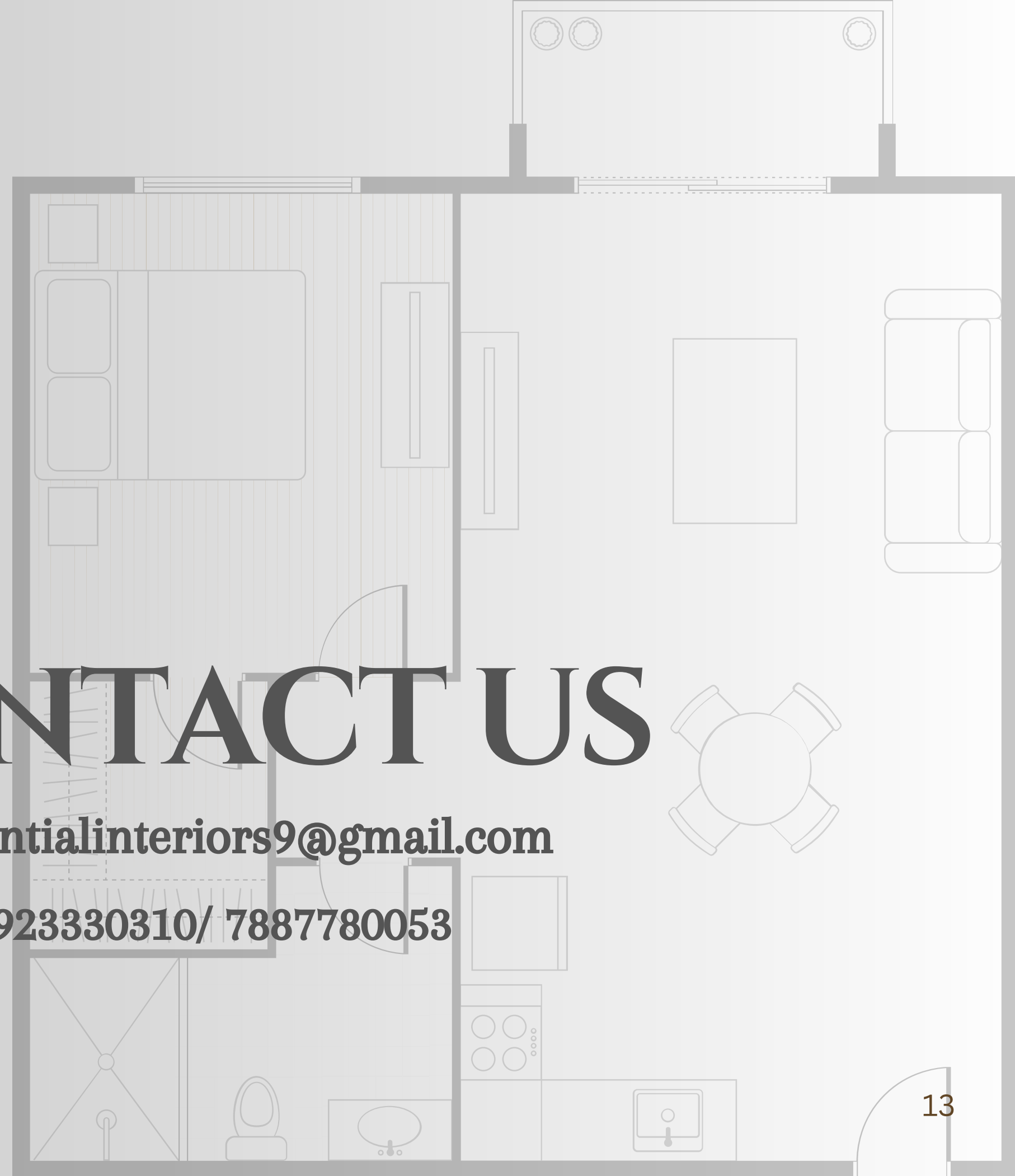




CONTACT US

potentialinteriors9@gmail.com

9923330310/ 7887780053





THANK YOU

BY:
POTENTIAL INTERIORS